



# BSD Dry Resins

## Blue Star Diamond Technology

The BSD Dry Resin line is the latest technology in the Blue Star Diamond family. Designed to follow the BSD Ceramics, the BSD Dry Resins allow contractors to complete their concrete and terrazzo polishing process with the same quality, long life and dependability for which BORIDE products have become known.



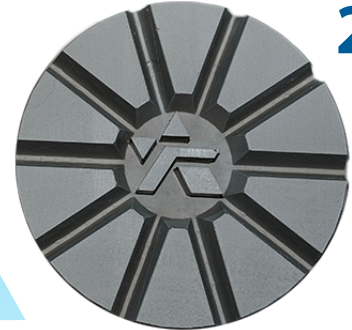
American Concrete Institute

Always advancing



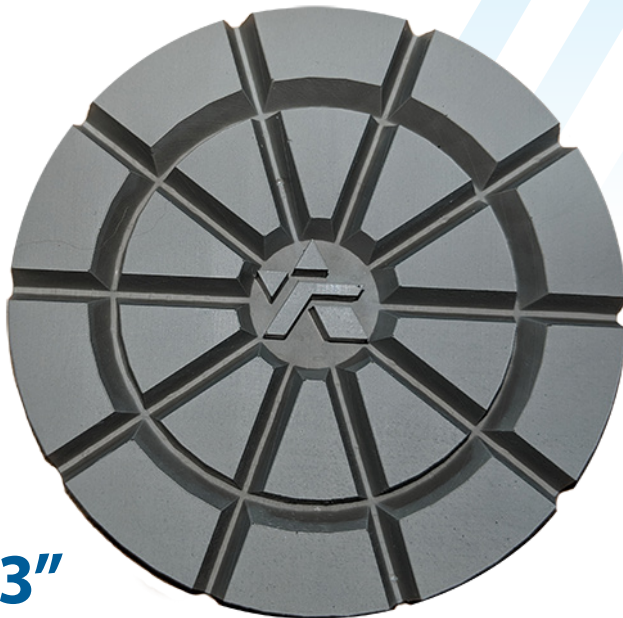
### PRODUCT FEATURES

- 6,000-8,000 sq ft average life
- Superior performance on soft to very hard concrete
- Designed to follow the BSD Ceramics
- Available in 400, 800 and 1500 grits
- Available in 3" and 2" (special order)
- 2" preferable for machines under 350 pounds
- Velcro attachment



2"

BSD Item #	Size	Description	Boss	Grit	Product Hardness	Concrete Hardness
7371	3"	Dry Resin	No Boss	400	Standard	Soft to Very Hard
7372	3"	Dry Resin	No Boss	800	Standard	Soft to Very Hard
7373	3"	Dry Resin	No Boss	1500	Standard	Soft to Very Hard



3"

### POLISHING RESULTS

Polishing Step	Gloss	DOI	Haze
400 Resin	11 - 23	2 - 12	1 - 2
800 Resin	32 - 48	47 - 65	3 - 7
1500 Resin	46 - 56	74 - 88	6 - 7
Guard + Burnish	68 - 74	93 - 96	4 - 6

Results subject to quality of concrete

[BSDdiamond.com](http://BSDdiamond.com)  
[BSDsales@BorideAbrasives.com](mailto:BSDsales@BorideAbrasives.com)

PHONE 231.929.2121  
 TOLL FREE 800.662.0336  
 FAX 231.943.2852

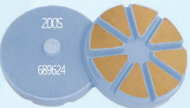
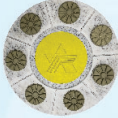
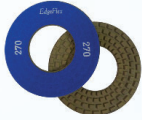


Made in the USA

**BORIDE**  
 Engineered Abrasives

2615 Aero Park Drive | Traverse City, MI 49686

# GRIND • HONE • POLISH • FINISH



			30	50	80	100	200	270	400	800	1500	3000	Concrete Hardness	
<b>EASY EDGE</b>	4"		◆	◆		◆		◆	◆				Soft Medium Hard Very Hard	
	5"		◆	◆		◆		◆	◆					
	6"		◆	◆		◆		◆	◆					
	7"		◆	◆		◆		◆	◆					
<b>EDGE FLEX</b>	5"		◆	◆		◆		◆	◆	◆	◆			
	7"		◆	◆		◆		◆	◆	◆	◆			
<b>BSD CORNER TOOL</b>	Triangle		◆		◆	◆		◆						
<b>STANDARD Bond</b>	3"	NO Boss	◆	◆		◆	◆		◆					Soft Medium Hard
		WITH Boss	◆	◆		◆	◆		◆					
	2"	NO Boss	◆	◆		◆	◆		◆	◆	◆			
		WITH Boss	◆	◆		◆	◆		◆	◆	◆			
<b>4 SEG FIRST CUT</b>	3" NO Boss		30/40	60/80	120/140							Hard		
	3" WITH Boss		30/40	60/80	120/140									
<b>BSD</b>	3" NO Boss		◆	◆	◆	◆	◆		◆	◆	◆		Soft Medium	
	3" WITH Boss		◆	◆	◆	◆	◆		◆					
<b>Dry Resin</b>	3"								◆	◆	◆		Soft Medium Hard Very Hard	
	2"								◆	◆	◆			
<b>BSD PAD</b>	11"		◆	◆	◆	◆	◆		◆	◆	◆	◆	Soft Medium Hard Very Hard	
	14"		◆	◆	◆	◆	◆		◆	◆	◆	◆		
<b>SOFT Bond</b>	3"	NO Boss	◆	◆		◆	◆						Very Hard	
		WITH Boss	◆	◆		◆	◆							
	3"	NO Boss		30/40	60/80	120/140								
		WITH Boss		30/40	60/80	120/140								
	3"	NO Boss	◆	◆	◆	◆	◆		◆					Hard
		WITH Boss	◆	◆	◆	◆	◆		◆					

**S**

Soft  
Concrete  
2-3 MOHS  
< 3000 PSI

**M**

Medium  
Concrete  
3-5 MOHS  
3000-4000 PSI

**H**

Hard  
Concrete  
5-7 MOHS  
4500-6000 PSI

**VH**

Very Hard  
Concrete  
7-9 MOHS  
>6000 PSI